



KIDELTA
LEARNING

Scalable AI for Automated Driving

Final Event | March 09, 2023

Data - The Basis for Delta Learning

Christian Witt

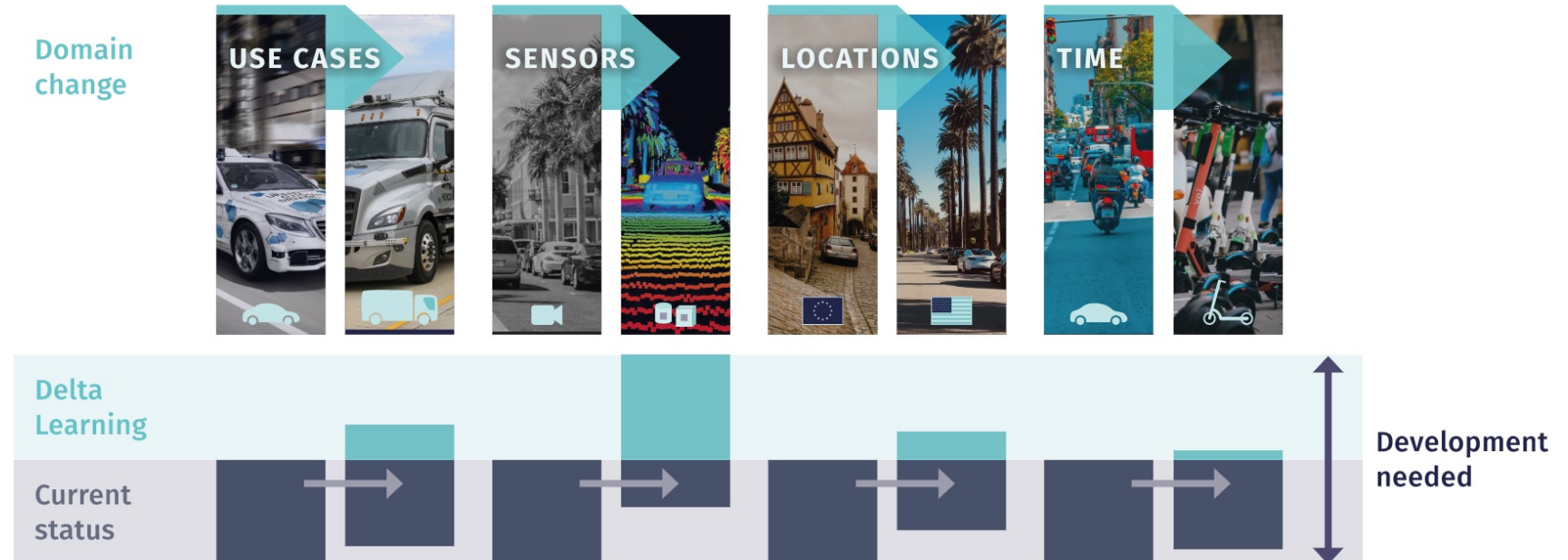
Deltas



Problem: complex situations & changing domains

Focus of projects: step by step extensions (= deltas)

- delta sensors
- delta traffic areas
- delta countries
- delta environment
- delta time
- (delta networks)





KIDELTA
LEARNING

Scalable AI for Automated Driving

»» Artificial Neural Networks require data!



What do we need?

- real world recordings & simulation
- sensors: reference + serial sensors
- environment:
 - multiple towns & another country
 - different weather and lightning conditions
 - ...
- 2D & 3D Annotations
- easy workflow for data management
- compliant to data protection (GDPR)





1

Creating Data for Deltas



KIDELTA
LEARNING

Scalable AI for Automated Driving

Delta Sensors



Sensor Overview

12 Cameras

- 1x Reference Camera 120° 8.9MP
- 1x Wide FoV Camera 130° 2.3MP
- 9x Protocol Cameras 90° 2.3MP
- 1x Serial Camera (Bosch MPC3) 100° 2MP

5 LiDARs

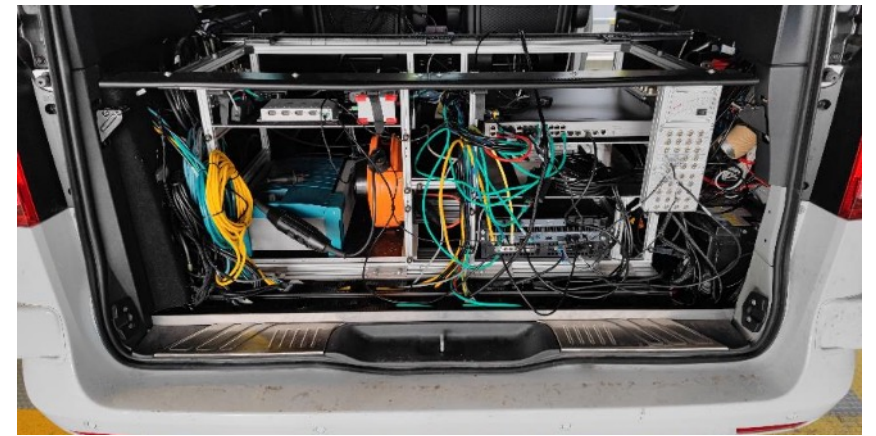
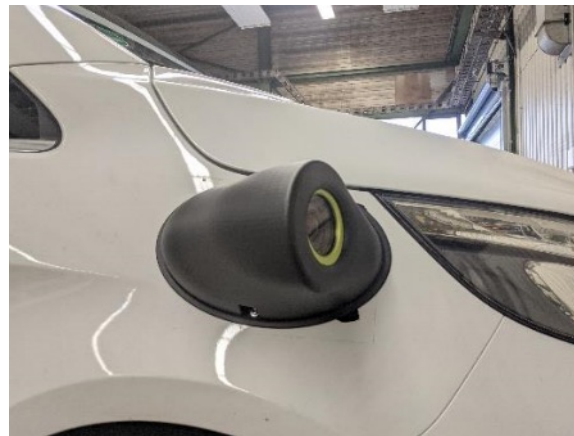
- 1x Reference LiDAR 128 Layer
- 2x Protocol LiDAR 32 Layer
- 2x Serial LiDAR (Valeo Scala Mobility Kit & Innoviz One)

Other

- 2x Radar (InnoSenT 5G3)
- 1x IMU



Recording Vehicle



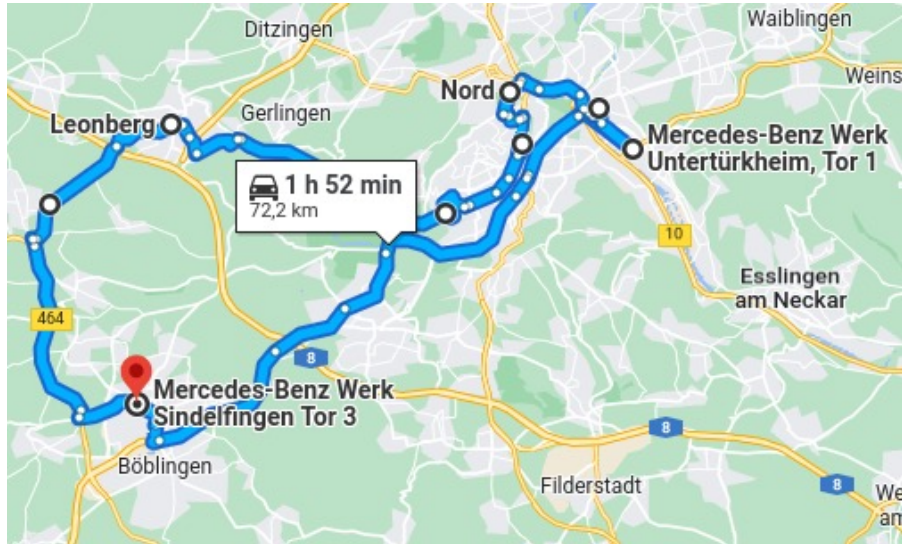


KIDELTA
LEARNING

Scalable AI for Automated Driving

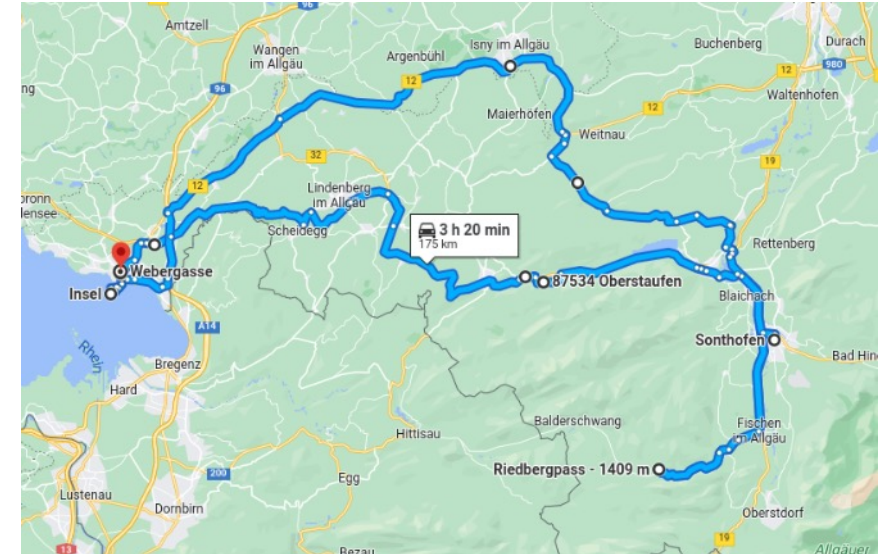
Delta Traffic Areas

Routes



Local Drive (80km, 2:00h)

Sindelfingen → Stuttgart → Leonberg



Local Drive 2 (175km, 03:20h)

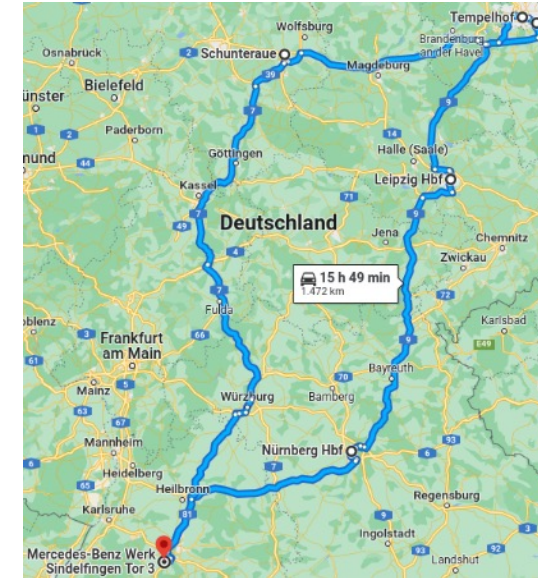
*Lindau → Oberstaufen → Oberstaufen
→ Füssen → Riedbergpass → Isny*

Routes



Day Drive (430km, 6:30h)

*Sindelfingen → Lindau → Friedrichshafen
→ Jungnau → Reutlingen*



Multi Day Drive (1500km, 16:30h)

*Sindelfingen → Nürnberg → Leipzig →
Berlin → Braunschweig → Würzburg*

DLR Infrastructure



DLR Infrastructure - Impressions





KIDELTA
LEARNING

Scalable AI for Automated Driving

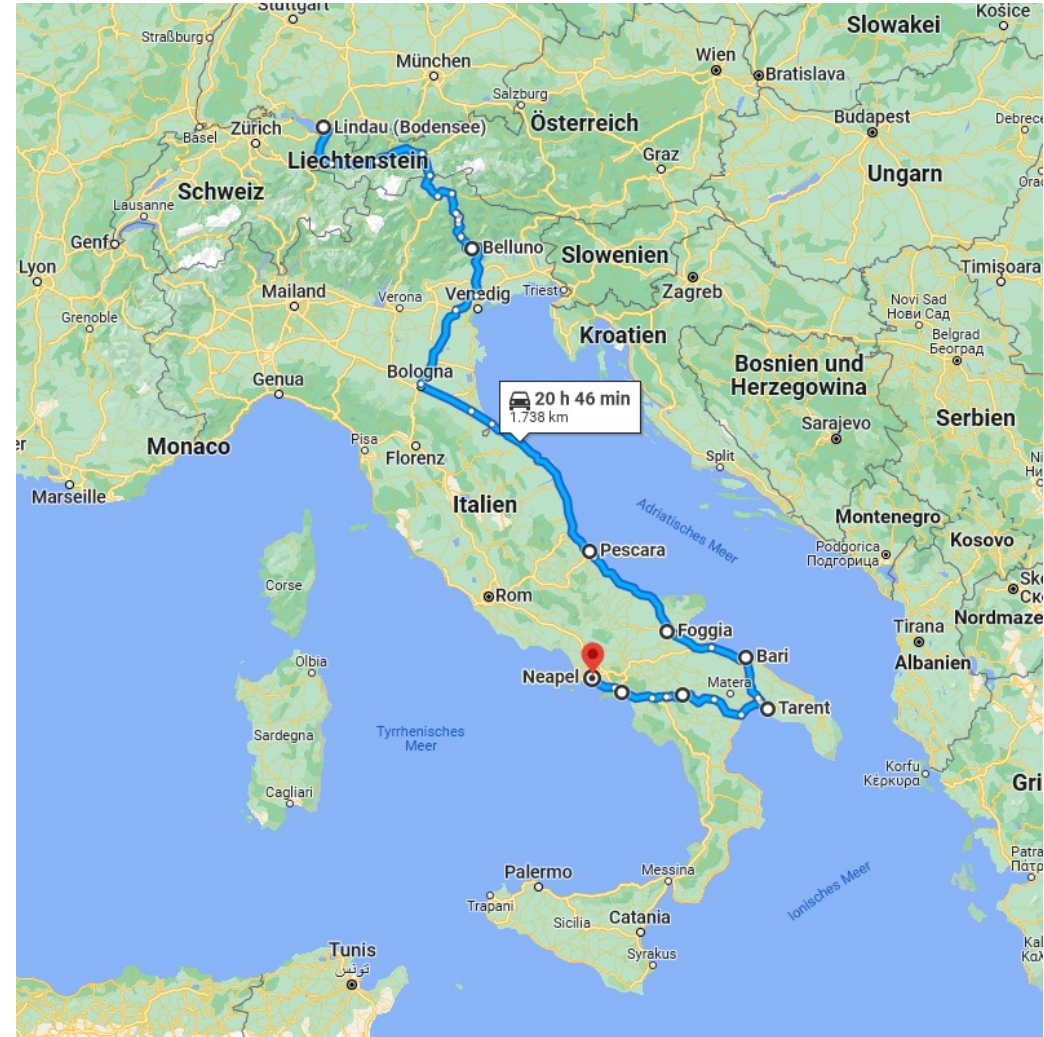
Delta Countries

Italy - Route

Italy Drive (2880 km, 32:46h)

Sterzing → *Belluno* → *Bologna* → *Pescara*
→ *Foggia* → *Bari* → *Tarent* → *Salerno* → *Neapel*

11 days



Italy - Impressions



Germany vs. Italy



Germany



Italy





KIDELTA
LEARNING

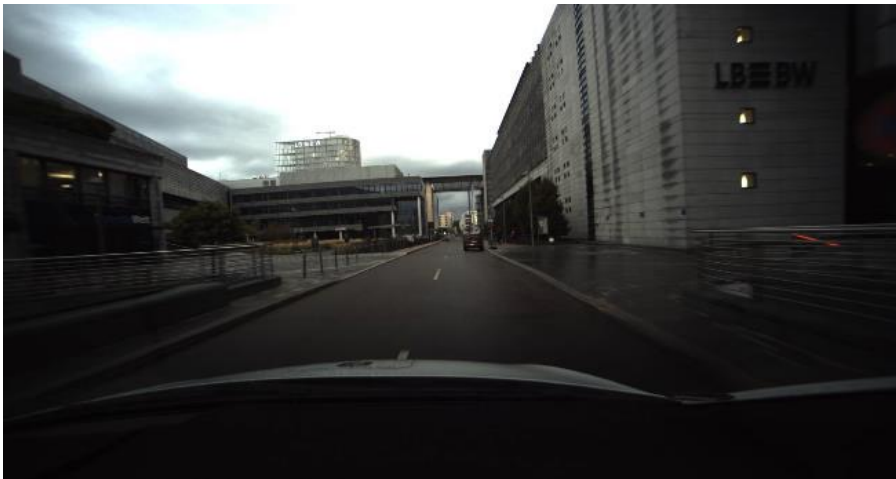
Scalable AI for Automated Driving

Delta Environment & Delta Time

Type: Urban, Interurban & Rural



Lighting Condition: Dawn, Day, Twilight & Night



Cloudiness: Sunny, Partly Cloudy & Dull



Humidity: Dry, Rain & Snow



Street Surface: Asphalt, Cobblestone & Dirt Road



Special Ways: Intersections, Tunnel & Bridges



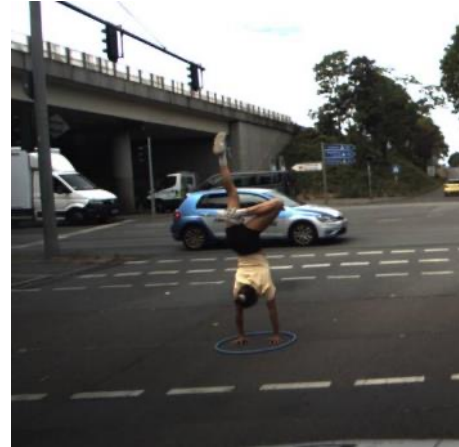
Special Cars



Pedestrians



Highlights

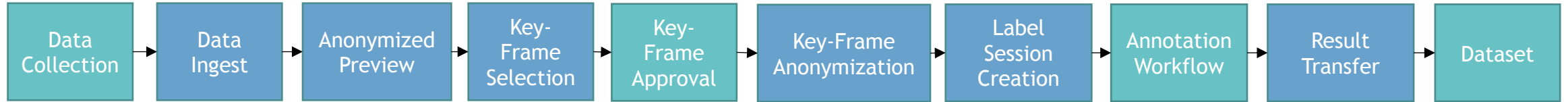


2

Annotations



Data Management & Key Frame Selection



cam_windshield_reference

Manual Key Frame Setting

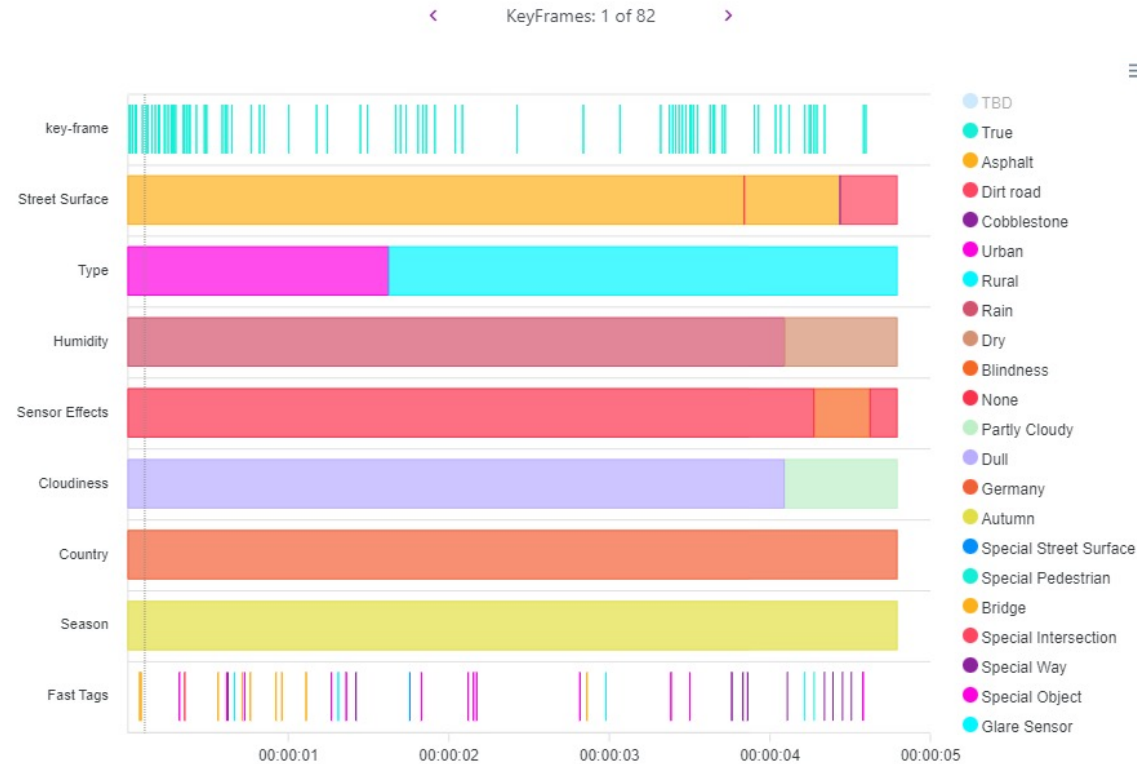
Value: True

From: 8

To: 8

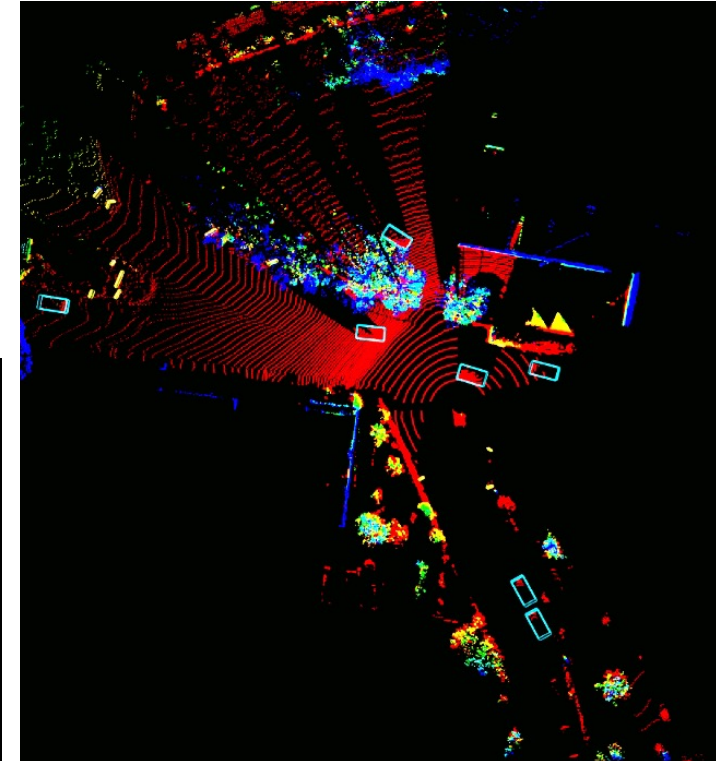
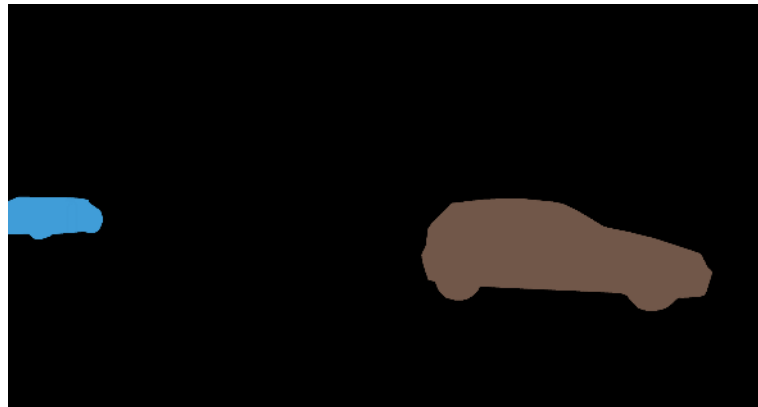
Reset

Submit



Automated Step
Manual Step

Annotation



2D Semantic Segmentation

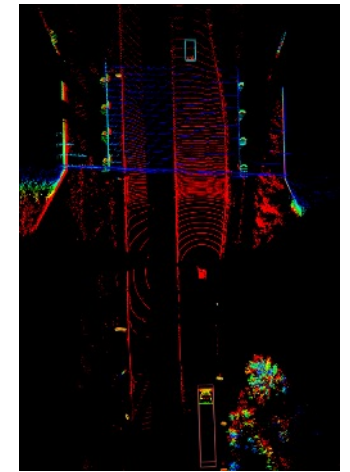
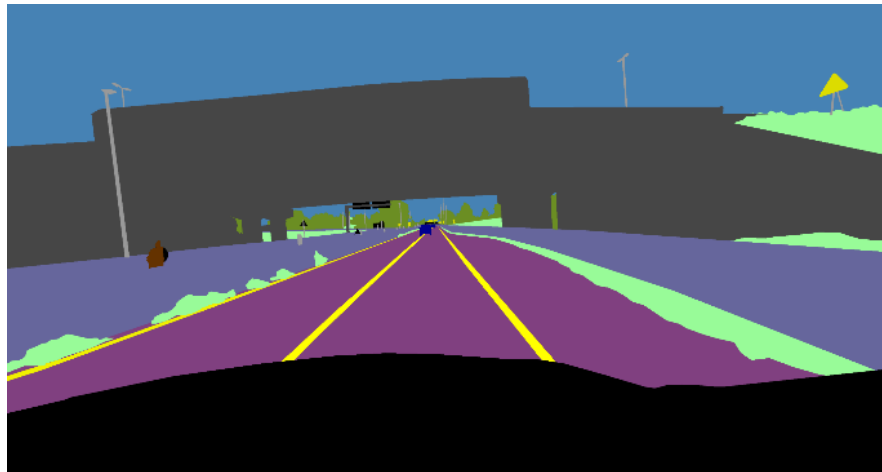
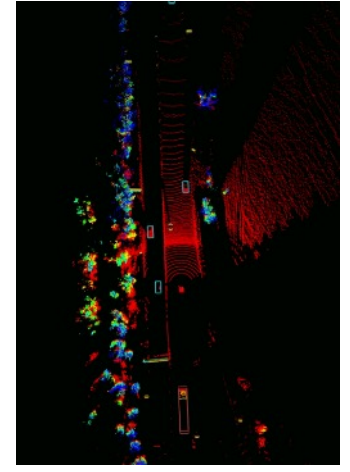
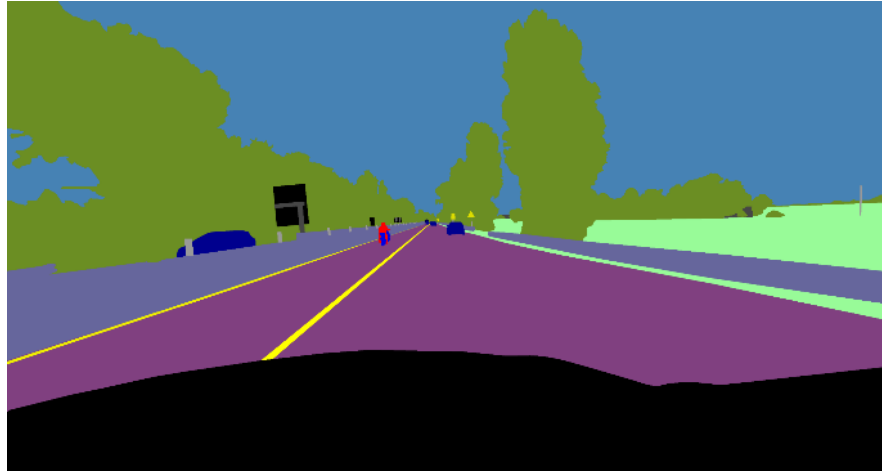
- *reference: 8.9MP 120° Front-Camera*

2D Instance Segmentation

3D Bounding Box

- *reference: Velodyne 128L 360°*
- including velocity

Annotation



3

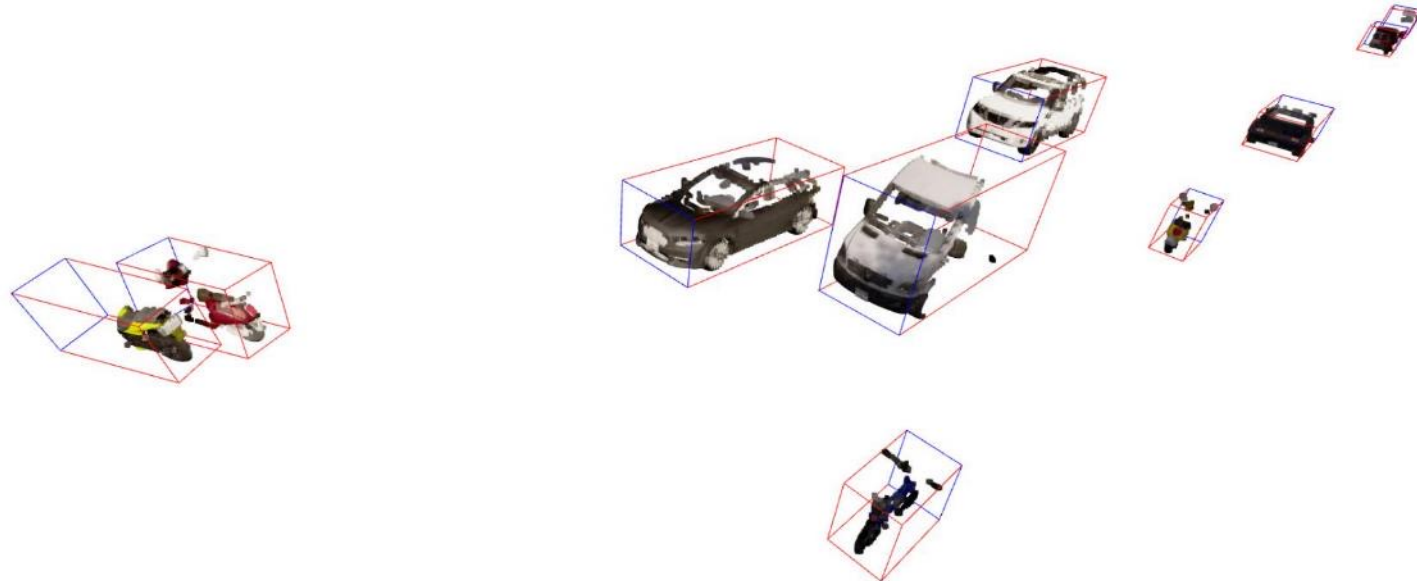


Synthetic Data Generation

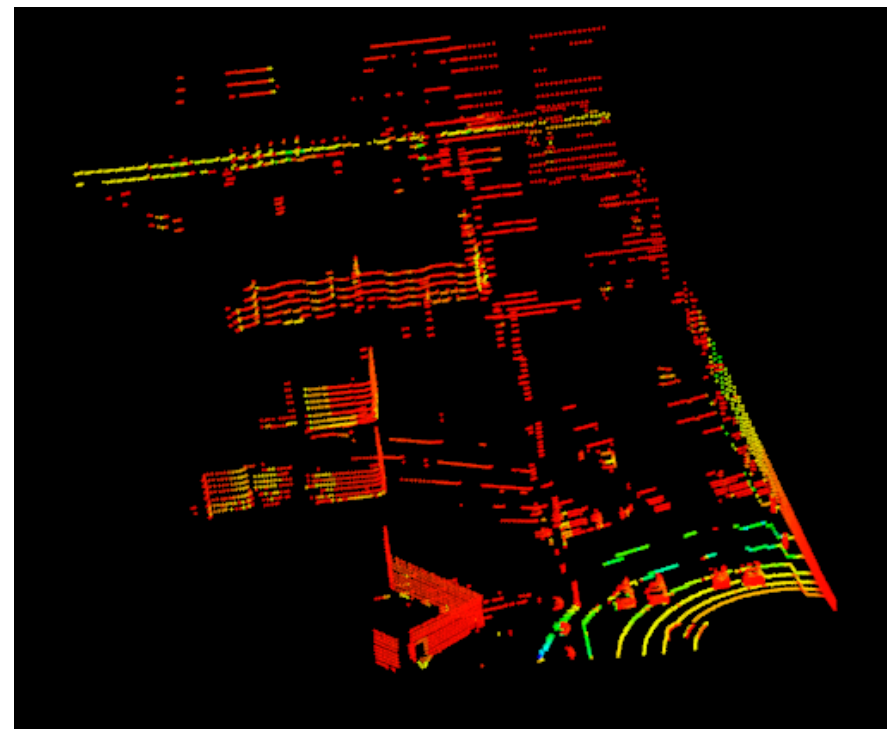
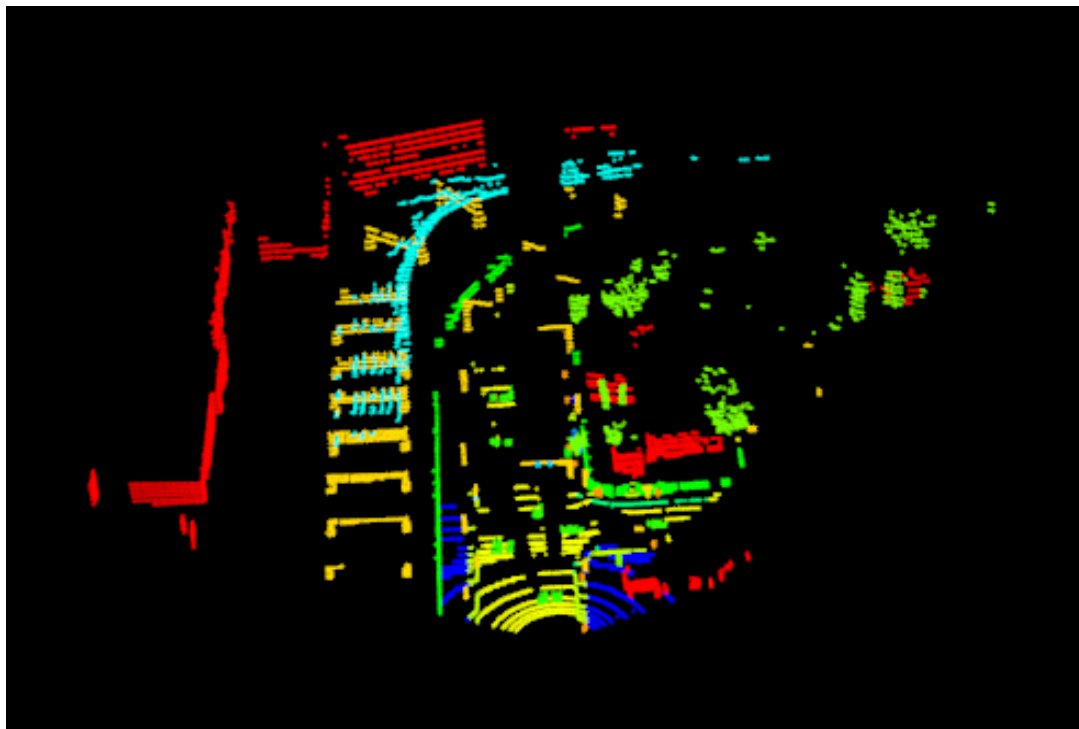
Data Generation in Carla



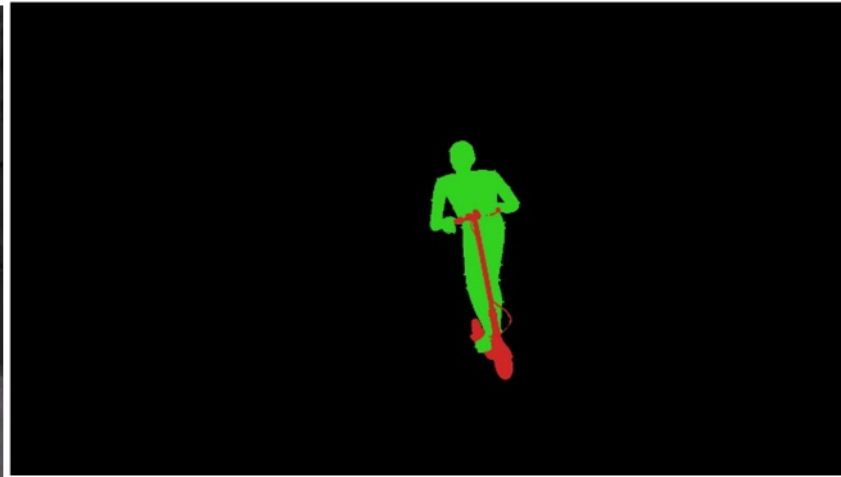
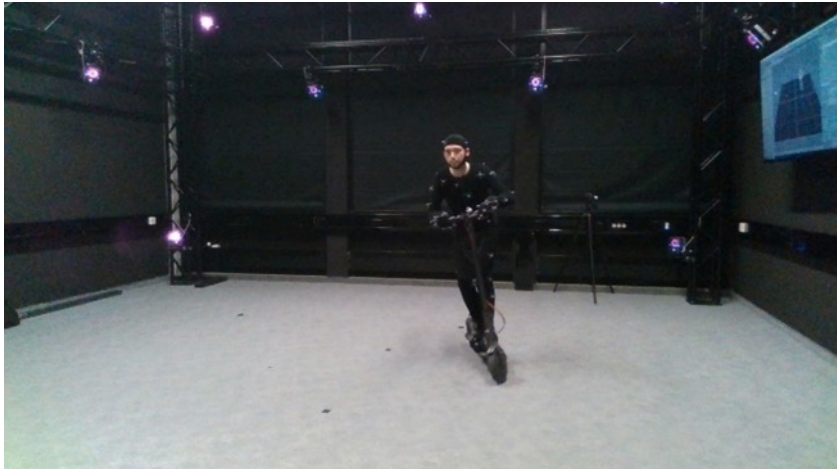
Improving Instance Segmentation in CARLA



Simulation of Rotating Pulsed Lidar



Motion Capture





4

What did we get?

What did we get?



193 hours

calibrated and
timestamped
raw data recordings

18,000

annotated real world
single frames

50,000

simulated labeled
frames from CARLA

Outlook



- partners can use the data after the project ends
- huge interest to publish the dataset





KIDELTA
LEARNING

Scalable AI for Automated Driving

Christian Witt | Valeo

christian.witt@valeo.com

KI Delta Learning is a project of the KI Familie. It was initiated and developed by the VDA Leitinitiative autonomous and connected driving and is funded by the Federal Ministry for Economic Affairs and Climate Action.



KI
FAMILIE

www.ki-deltalearning.de  @KI_Familie  KI Familie

Supported by:



on the basis of a decision
by the German Bundestag